

K O B E

Kobe City PR Digest English June 2024

Discover Kobe's West Coast!



If you have any questions about ward office procedures, financial support for raising children, etc.

Call the Kobe International Community Center (KICC)!

☎ 078-742-8721 (11 languages)



↑ Scan here to visit the website!



Edited by: Kobe City Community Engagement Division

Discover Kobe's West Coast!

In addition to the re-opening of the aquarium, the Suma Marine Fishing Park and stores will also be renovated in autumn.

Below are some of the many activities that will have you coming back again for more!



Buzzwords for Your Trip:

#BeachBathing (Suma/Maiko)

Beaches are open for swimming this year from Thursday, July 11 to Sunday, August 25. The "Smile Beach Area" at Suma Beach is perfect for bringing your children for a swim, with shade and parasol areas!

Information on Suma Beach (JPN)



Information on Azur Maiko (JPN)



#ObserveWildlife (Maiko)



At Azur Maiko, you can come face-to-face with some of the sea's inhabitants. You can get an illustrated reference booklet and a guide map at the beach management office.

Further Details (JPN):→



Suma Sea World Grand Opening!

Suma Sea World is open as of June 1st! Come see all varieties of underwater creatures, including killer whales! Visitors can also stop by the food court and aquarium store, which is filled with original goods.



Admission Information here: →



General Admission:

Adult: 3100円

Junior (Elementary/junior high school): 1800円

※For city residents, 500円 once per year if you apply in advance via official homepage.

Child (4~6 y.o.): 1800円

※For city residents, free once per year if you apply in advance via official homepage.

Ages 3 or under: Free Senior (65+ y.o.): 2500円

Hours: 10:00~18:00 (Until 20:00 on weekends and national holidays)

Location: 1-3-5 Wakamiyacho, Suma Ward

Tel: 078-731-7301

Further Details (JPN):



A Newly Renovated Tamatsu Public Office

The Tamatsu Public Office, where the former Nishi ward office was located before moving to the current Seishin Chuo location in 2021, will finish renovations on Sunday, June 16 for a whole new look.



The new wooden interior provides a warm atmosphere, and there are various facilities that parents and children will be able to use.

1F & 4F "Tamarotto" Activity Spaces

With these renovations, there is now a kids space and a kitchen area on the first floor, and a free study space, library, and multipurpose hall available on fourth floor. Stop by these facilities for a refresher!

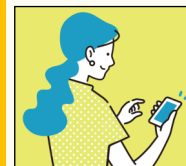
Opening Date: Monday, June 17

Hours of Operation: Monday to Saturday, 8:30~21:00 (excluding Dec.29~Jan.3)

Further Details (JPN):→



Your Voice for a Better Kobe!



Kobe City is currently conducting an online survey to gather opinions on city planning. Please take this opportunity to register and voice your thoughts to the City!

Eligible Persons: Kobe City residents, ages 15 and up (excluding JHS students)

Registration: via Kobe NetMonitor app or Kobe City homepage

Compensation: If you complete 6 or more surveys throughout the year, you may be eligible for a digital gift of 1000 yen.

Further Details (JPN):→



Decrease in Residence and Income Taxes

In accordance with the 2024 fiscal year tax reforms, residence taxes and income taxes will be reduced in order to ease the tax burden when wage increases are not keeping up with inflated prices and cost of living increases.

Reduced Residence and Income Taxes

① FY2024 Residence Tax

Eligible Persons: Taxpayers with a total income of 18.05 million yen or less during FY2023

※Those who are taxed only on a fixed amount of residence tax are not eligible.

Tax reduction: 10,000円 per person including dependents

Application: Not required

② FY2024 Income Tax

Eligible Persons: Taxpayers with a total income of 18.05 million yen or less during FY2024

Tax reduction: 30,000円 per person in a household, including dependents

Application: Not required

※Please confirm your income tax break with your local tax office.

Inquiries: Fixed Tax Credit and Benefits Call Center
TEL. 078-771-7201

Hours: 8:45~17:30, except weekends and national holidays

※The following language support is available:

English | Mandarin | Portuguese | Spanish | Vietnamese | Tagalog | Nepalese

Further Details about
Tax Reductions (JPN)→



Kobe Childcare Navigation

Starting in June, consultations with the “Kobekko Developmental Specialist Team” will be available in Higashinada and Nada wards. Staff members of the specialist team consists of public health nurses and psychologists, who will conduct interviews and developmental tests.



Further
Details
(JPN):→



If you have concerns about your child's development:

At each ward office, you may consult a public health nurse about childcare, infant health checkups, as well as about your child's growth and development.

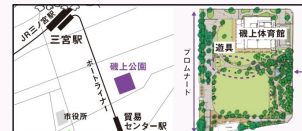
Please consult with your local ward office, clinics, or consultation center.



Details on Where to Consult (JPN)→

This Month's Spot: Isogami Park

Located southeast of Sannomiya, the newly renovated Isogami Park is now an urban oasis of healing and vitality, and will be open from Thursday, June 6!



① Green, Open Spaces for People of All Ages

There will be grassy lawns in the center of the park for activities and games.



② Soak in Nature at the New “Healing Garden”

The east side of the park will now feature a “Healing Garden,” a peaceful space with waterfalls, small ponds, and greenery.



Further Details
(JPN):→



Upcoming Seasonal Events!



Hydrangea Forest Trail

Featuring 25 types and 350 varieties of flowers to view.

Location: Kobe Municipal Arboretum (Kita Ward)

Open Period: Saturday, June 8 to Monday, July 15, 9:00~17:00 on weekdays. (Weekends and national holidays: 8:00~18:00)

Admission: Park fee (Parking fees may apply)

Further Details
(JPN):→



Inquiries: 078-591-0253

Welcome Jamboree 2024

Packed with fun events and live performances for families and people of all ages to enjoy!



Location: Kobe Bunka Hall/ Okurayama Park (Chuo Ward)

Date: Saturday, June 22, 10:00~15:40

Admission: Fees apply. (Part of the Jamboree is free, see further details)

Notes: Reserve your seat for the picture book live performance on the homepage or via TEL (078-351-3349). Reservations are first come first served.

Inquiries: 078-351-3397

Further Details
(JPN):→



Muddy Merriment: Kobe Volleyball Tournament

Currently accepting team applications (groups of 6) to participate in a volleyball tournament in a paddy field! Join in the fun and get down and dirty with volleyball!



Location: Paddy field near entrance to Kobe Fruit & Flower Park Ozo (Kita Ward)

Date: Sunday, July 28, 10:00~16:00

Fee: 10,000円 per team

Application: via homepage, by Sunday, June 30. Participation will be decided by lottery.

Inquiries: 078-954-0301

Further Details
(JPN):→

