

Bringing you news from Kobe City every month

KOBE

Kobe PR Paper English April 2022

Now open!



A forest of books
to nurture children's minds

今月の
特集はコレ！



If you have any questions about
ward office procedures, financial
support for raising children, etc.

**Call the Kobe International
Community Center (KICC)!**

☎ 078-742-8705 (11 languages)



↑ Tap here
to visit the
website!



Edited by: Kobe City International Division

KOBE Children's Book Forest

Nurturing children's minds

A library for children opened in Sannomiya on March 25.

What is the KOBE Children's Book Forest?

This library was designed so that children can freely read a wide range of picture books, fairy tales, children's literature, field guides, and other books for kids. Famous architect Tadao Ando designed and donated the library with this idea in mind: "I hope the children will encounter many books, and thereby nurture their sense of empathy and gain the abilities needed to survive and thrive."

◆ Walls filled top-to-bottom with books

Upon entering, visitors are welcomed by the sight of walls covered from floor to ceiling with bookshelves—a bona fide "book forest". The books in the upper shelves are arranged to show off their covers so that if a child sees a cover that catches their eye, they'll think, "I wanna read that one!" This way of organizing the library provides children with more opportunities to discover new books.

◆ Read any book you want, anywhere you want

Children are free to find random places to read the books: They can sit on the giant staircase in the library, and on sunny days they can even go outside and read on the grassy lawn in Higashi Yuenchi Park. They don't have to sit in a chair, and they can adopt any reading position they please.

◆ A space created to inspire reading

Children can concentrate on reading within the quiet atmosphere of the cylindrical Break Room. Light streams down from the ceiling to evoke a mystical, church-like ambience, and children can sit and read in chairs that have book holders reminiscent of those in a church.

◆ 15 themes related to Kobe

Unlike a regular library, the books are organized into 15 themes tied to Kobe, regardless of type. From picture books to literature, this gives children opportunities to encounter books they've never known before.

KOBE Children's Book Forest

General facility information

Hours 9:30 - 17:00 (Closed Mondays) *Or closed the following weekday if Monday is a national holiday.

Location Southern part of Higashi Yuenchi Park
(6-1-1 Kano-cho, Chuo-ku)

Admission Free

Collection About 25,000 books (Started with 18,000 at the time of opening)

*Books cannot be checked out to take home

How to Make a Reservation In order to prevent the spread of Covid-19, this library is currently accessible on a reservation-only basis, with a 90-minute time limit.

All ages are allowed. **Visit the website below to make a reservation.** Selection by lottery.

Tap here for details & reservations→
(Machine translation available. However, reservation site is in Japanese only.)



Visit the public bathhouse with the family! Get discounts for the whole year!

There are 32 old-fashioned public bathhouses in Kobe. Although there are far fewer now compared to their peak in the late 1960s, each of the remaining bathhouses possesses a unique ambience and character. To increase the number of visitors to these places, as well as encourage interaction among different age groups in the neighborhood, Kobe City is offering a special electronic ticket, which offers a discount to families (no limit to the number of visits).

When an adult is accompanied by children 18 or under, the bathing fees for all children are free. In addition, for every child present, 1 adult's fee is half price. (Ex. 450 yen fee becomes 220 yen)

◆**Application** Visit the website below between April 1, 2022 - March 31, 2023 to apply.

◆**Ticket Validity Period** April 15, 2022 - March 31, 2023 *Registration is necessary after application

Tap here for details (JP)→



The 7 Pillars for making Kobe a thriving city with a bright future

These are some of the ways that the city's budget for the 2022 fiscal year is being used to make our city even better than before.

① Winning the fight against Covid-19

- Expedited pace of vaccinations
- Support for struggling & single-parent households

② Protecting citizen's health and safety

- Ensuring sufficient nursing care staff numbers
- Reinforcement of seawalls

③ Creating a family-friendly community

- Relocation & expansion of Kobekko Land and the Child Counseling Center
- Midwife home visits for expecting mothers
- Subsidized commuter passes for high school students

④ Fostering environments for more carefree living

- Support for moving to rural and agricultural neighborhoods
- Maintenance to ensure the preservation and regeneration of local biodiversity

⑤ Strengthening Kobe's economy

- Business matching programs to connect large companies with SMEs
- Support for startups and creative industries

⑥ Transforming Kobe's urban areas

- Redevelopment of the Sannomiya city center
- Renovation of areas around Myodani Station and Seishin-chuo Station

⑦ Encouraging citizen involvement in the city's digitalization

- Expansion of online applications for government procedures
- Launch of Smart Kobe website for citizens

Reopening of the newly renovated Kobe Science Museum

The Kobe Science Museum has been undergoing renovations of its planetarium and other facilities. As of April 2, the first stage of renovations is complete: a new exhibit that allows visitors to learn about the latest scientific technology. Visitors of all ages can enjoy experiencing the world of science!

(The planetarium will reopen in July 2022.)

Learn about robots & AI, think about the future



Through the Robot Corner's exhibits and hands-on activities, you can learn about the workings of robots and how they make our lives easier. At the AI Corner, you can see, touch, and operate the various exhibits.

Experience a video projection area that will get children excited about science

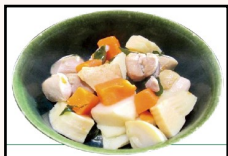
Colorful images of space, the sky, the sea, the forests, and cities will be projected on a 12-meter-long stretch of floor and wall. When you step within range, the animations will shift in reaction to your movements, and it will almost seem as if you are part of the projection!



Recipe for a school lunch favorite!

Simmered Young Bamboo

Bring the taste of school lunch home!



This dish combines the delicious taste of spring: wakame seaweed with bamboo shoots. We are keeping it simple by using preboiled and dried ingredients, but this dish will taste even better if you use these ingredients when they come in season.



Ingredients (for 4 servings)

• Bamboo shoot (preboiled)	120g	• Salad oil
• Carrot	1/2	• Cooking wine 1 tsp
• <i>Wakame</i> seaweed (dried)	6g	• Dashi broth 80ml
• Chicken (thigh)	120g	• Salt 1/4 tsp

[A]

• Sugar	1/2 Tbsp
• Soy sauce	1/2 Tbsp



Directions

- ① Cut the bamboo shoot into 1.5-cm cubes, then the carrot into 1-cm cubes.
- ② Rehydrate the *wakame* in water.
- ③ Cut the chicken into bite-sized pieces.
- ④ Heat some oil in a pot, stir-fry the chicken, then add the cooking wine. Stir-fry the bamboo shoots and carrots, then add *dashi* broth and 1/2 of [A]. Simmer.
- ⑤ Add the *wakame*, the rest of [A], and the salt. Simmer.



Tap the code to see all of the school lunch recipes on Cookpad!